

DOCUMENT

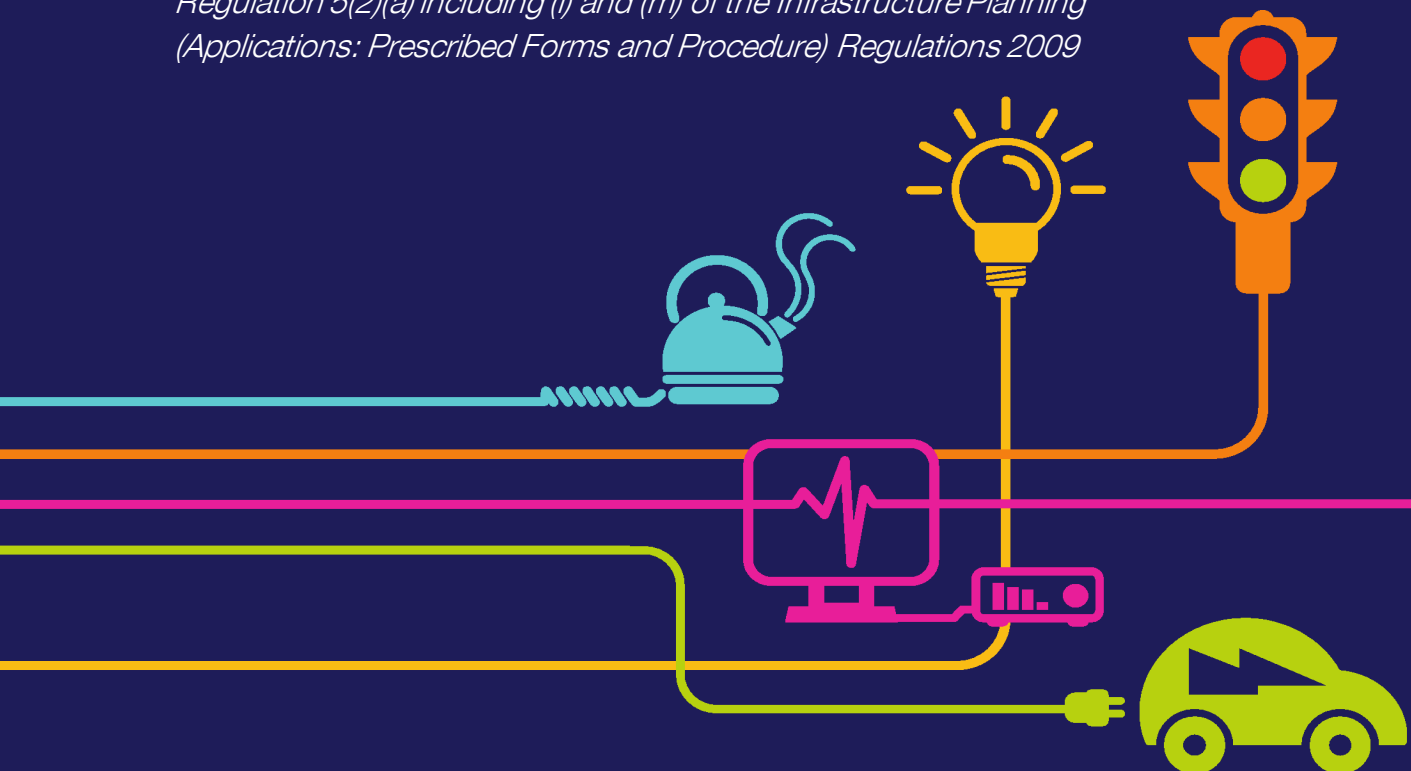
5.7.2.4

Registered Parks and Gardens Excluded from the Landscape Assessment

Chapter 7 – Appendix 4

National Grid (North Wales Connection Project)

*Regulation 5(2)(a) including (l) and (m) of the Infrastructure Planning
(Applications: Prescribed Forms and Procedure) Regulations 2009*





North Wales Connection Project

Volume 5

Document 5.7.2.4 Appendix 7.4 Registered Parks and Gardens Excluded from the Landscape Assessment

National Grid
National Grid House
Warwick Technology Park
Gallows Hill
Warwick
CV34 6DA

Final September 2018

Page intentionally blank

Document Control			
Document Properties			
Organisation		Gillespies	
Author		Rebecca Greatrix	
Co Authors		Lindsay Robinson	
Approved by		Sarah Gibson	
Title		Appendix 7.4 Registered Parks and Gardens Excluded from the Landscape Assessment	
Document Reference		Document 5.7.2.4	
Version History			
Date	Version	Status	Description/Changes
September 2018	Rev A	Final	Final for submission

Page intentionally blank

Contents

1	Introduction	1
1.1	Introduction	1
1.2	Registered Parks and Gardens within the Landscape Study Area	2

Page intentionally blank

1 Introduction

1.1 INTRODUCTION

1.1.1 This Appendix briefly describes the following seven Registered Parks and Gardens (as included within the Register of Parks and Gardens of Special Historic Interest in Wales) that lie within the study area as illustrated in Figure 7.1 (**Document 5.7.1.1**) and Figure 7.2 (**Document 5.7.1.2**):

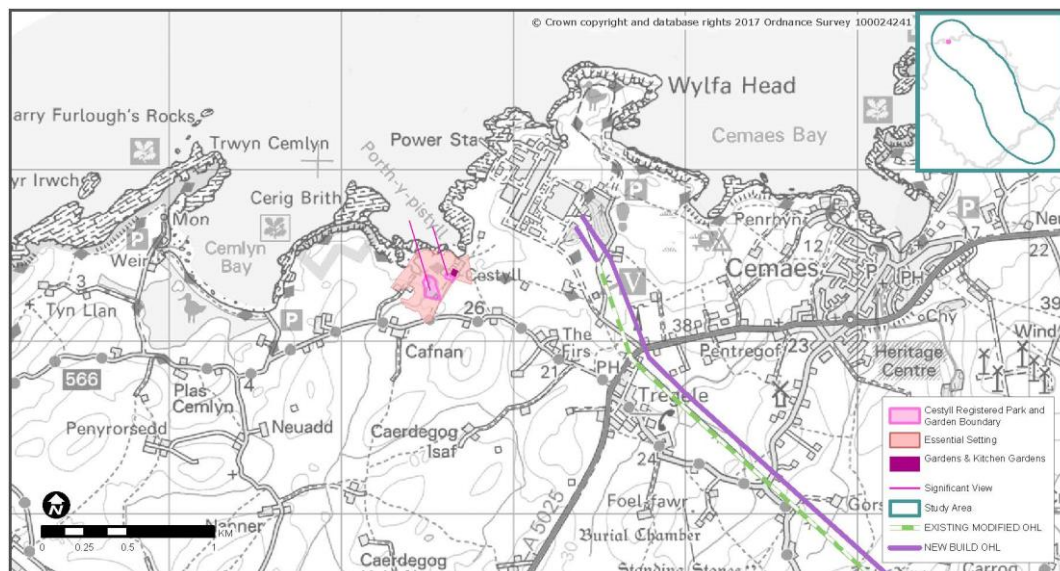
- Cestyll;
- Plas Berw;
- Plas Gwyn;
- Plas Newydd;
- Vaynol;
- Llanidan; and
- Penrhyn.

1.1.2 As explained in section 3 of Chapter 7, Landscape (**Document 5.7**) these Registered Parks and Gardens have been excluded from the landscape assessment. It was considered duplicative to individually assess the Parks and Gardens in the landscape chapter as those most likely to be affected are assessed within Chapter 10, Historic Environment (**Document 5.10**) and the remainder are highly unlikely to be affected as explained further in this appendix.

1.1.3 The contributions the Registered Parks and Gardens make towards landscape quality and character is taken into account when considering the overall value of the landscape as included within the assessment of the Visual and Sensory Aspect Areas (VSAAs) (see Appendix 7.2, VSAA Character Assessment (**Document 5.7.2.2**)). A baseline description of each of the designated Parks and Gardens is included within this document together with judgements relating to value, susceptibility and sensitivity, for background information, together with a reference to the relevant VSAA(s) within which they lie. More detailed commentary is also provided to explain why they have been excluded from the landscape assessment.

1.2 REGISTERED PARKS AND GARDENS WITHIN THE LANDSCAPE STUDY AREA

Cestyll Registered Park and Garden



Description of Baseline

- 1.2.1 Cestyll Registered Park and Garden is located to the north-west of Anglesey, on the coastline immediately west of Wylfa Nuclear Power Station. It is situated within a valley which runs northwards towards the sea. It is Grade II registered as a result of its unusual, small and intimate 1920's design and range of plants suited to its rocky seaside location. Sea views are integral to its design.

VSAA in which it is located

- 1.2.2 Cestyll lies within YNSMNVS035 and YNSMNVS008 (refer Appendix 7.2, VSAA Character Assessment (**Document 5.7.2.2**)).

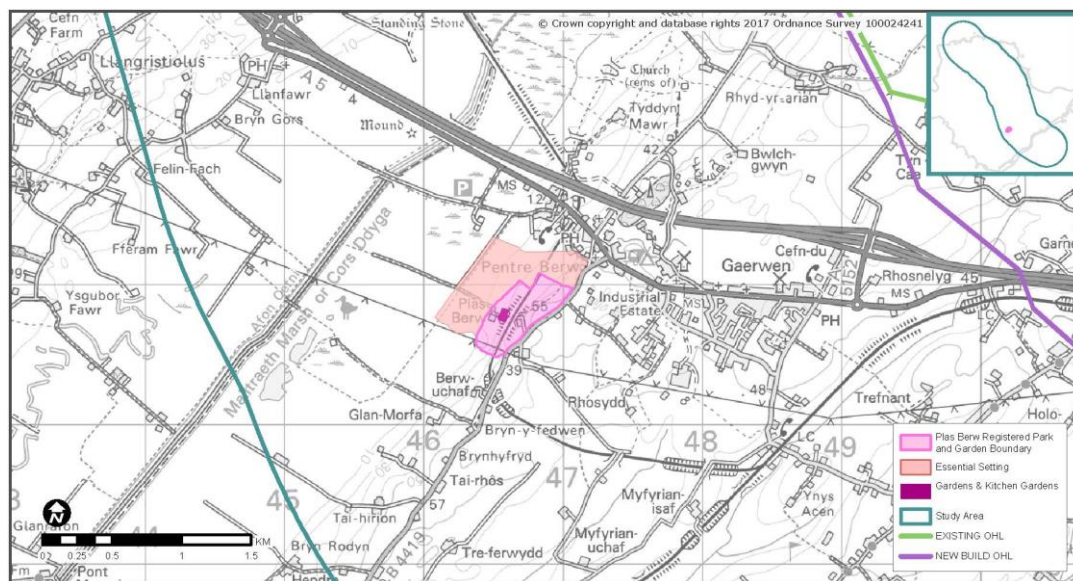
Value, Susceptibility and Sensitivity

- 1.2.3 As a Registered Park and Garden Cestyll has a high value; its landscape is also highly susceptible to the Proposed Development due to its small scale and intricate design and close relationship to the sea. The overall sensitivity of this Registered Park and Garden to the Proposed Development is assessed as high.

Reason for Excluding from Landscape Assessment

- 1.2.4 Excluded from the Historic Environment as explained in Chapter 10, Historic Environment (**Document 5.10**).

Plas Berw Registered Park and Garden



Description of Baseline

- 1.2.5 Plas Berw Grade II* Registered Park and Garden is located to the south west of the study area. The house and gardens are set within an extensive deer park laid out over the slopes of a ridge overlooking Malltraeth Marsh. An existing 66 kV OHL runs along the southern boundary of the essential setting of the Park and Garden, entering it for a short stretch.

VSAA in which it is located

- 1.2.6 Plas Berw lies within YNSMNV027 (refer Appendix 7.2, VSAA Character Assessment (**Document 5.7.2.2**)).

Value, Susceptibility and Sensitivity

- 1.2.7 As a Registered Park and Garden Plas Berw has a high value. Due to the fact that it is a designed landscape, affected locally by the existing 66 kV OHL, it is considered to have a medium-high susceptibility to the Proposed Development. The overall sensitivity of this Registered Park and Garden to the Proposed Development is assessed as high.

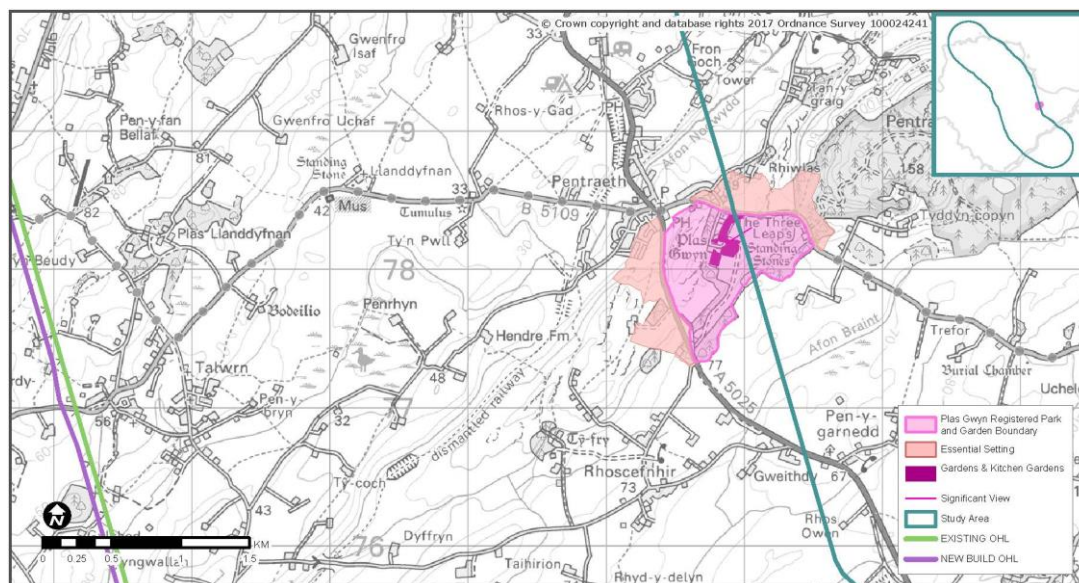
Reason for Excluding from Landscape Assessment

- 1.2.8 This Registered Park and Garden is located toward the west of Gaerwen along the upper slopes of Malltraeth Marsh in Anglesey. At its closest point it lies at some distance from the Proposed Development (approximately 2.5 km from the LOD and 2.2 km from the nearest point of the Order Limits).
- 1.2.9 Although the sensitivity of this discrete part of the landscape to the Proposed Development is considered to be high, it would not be directly

affected by the construction, operation, maintenance or decommissioning phases of Proposed Development; construction traffic would not travel through it.

- 1.2.10 Due to its distance, activities and infrastructure associated with the construction, operation, maintenance and decommissioning phases of the Proposed Development would be barely perceptible from here, thus would not affect the character of the Registered Park and Garden.

Plas Gwyn Registered Park and Garden



Description of Baseline

- 1.2.11 Plas Gwyn Registered Park and Garden is Grade II listed and consists of eighteenth century site (with nineteenth-century alterations) of terrace and lawn with shrubbery, woodland walk and walled garden, set in parkland with woods. The western part of the park is described as ‘a barren heathy ridge falling away to the village below [with the house standing] in a green vale at its centre, beneath the woods that clothe its rising eastern boundary’¹.

VSAA in which it is located

- 1.2.12 Plas Gwyn lies within YNSMNVS022 and YNSMNVS017 (refer Appendix 7.2, VSAA Character Assessment (**Document 5.7.2.2**)).

Value, Susceptibility and Sensitivity

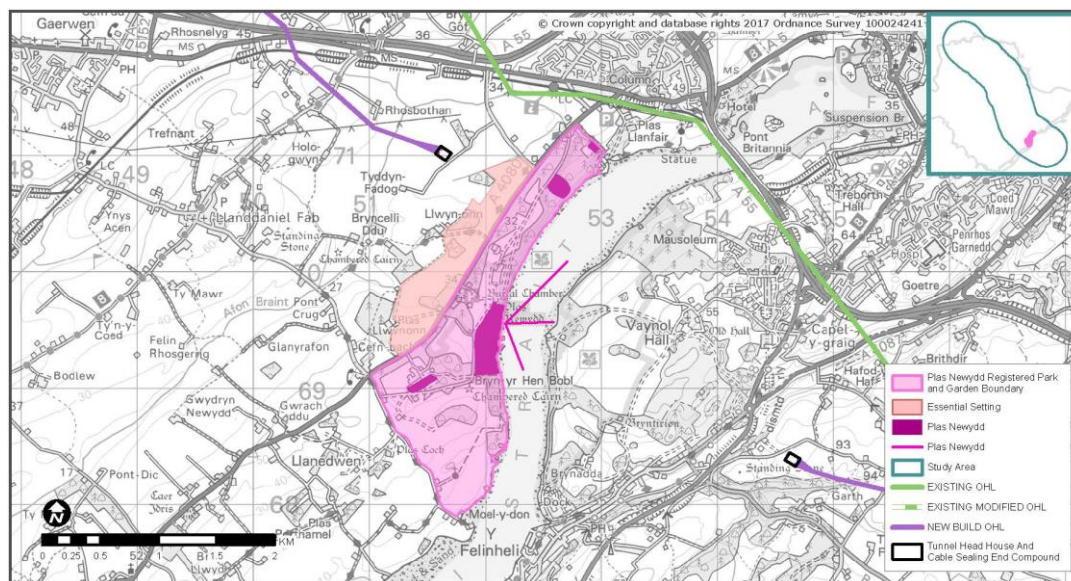
- 1.2.13 As a Registered Park and Garden Plas Gwyn has a high value. Due to the fact that it is a designed landscape it considered to have a high susceptibility to the Proposed Development. The overall sensitivity of this Registered Park and Garden to the Proposed Development is assessed as high.

¹ www.coflein.gov.uk – Royal Commission on the Ancient and Historical Monuments of Wales

Reason for Excluding from Landscape Assessment

- 1.2.14 This Registered Park and Garden is located along the outer edge of the study area near Pentraeth to the south-east of Anglesey, just inland from Red Wharf Bay. At its closest point it lies at some distance from the Proposed Development (approximately 4.4 km from the LOD and 4 km from the nearest point of the Order Limits).
- 1.2.15 Although the sensitivity of this discrete part of the landscape to the Proposed Development is considered to be high, it would not be directly affected by the construction, operation, maintenance or decommissioning phases of Proposed Development; construction traffic would not travel through it.
- 1.2.16 Due to its distance, activities and infrastructure associated with the construction, operation, maintenance and decommissioning phases of the Proposed Development would be barely perceptible from here, thus would not affect the character of the Registered Park and Garden.

Plas Newydd Registered Park and Garden



Description of Baseline

- 1.2.17 Plas Newydd Registered Park and Garden lies to the north of the Menai Strait. It is a Grade I registered site landscape dating back to the turn of the 18th and 19th centuries and comprises a landscaped park, woodland, waterside features and terraced garden with its location and panoramic views being integral to its special character.

VSAA in which it is located

- 1.2.18 Plas Newydd lies within YNSMNVS026 (refer Appendix 7.2, VSAA Character Assessment (**Document 5.7.2.2**)).

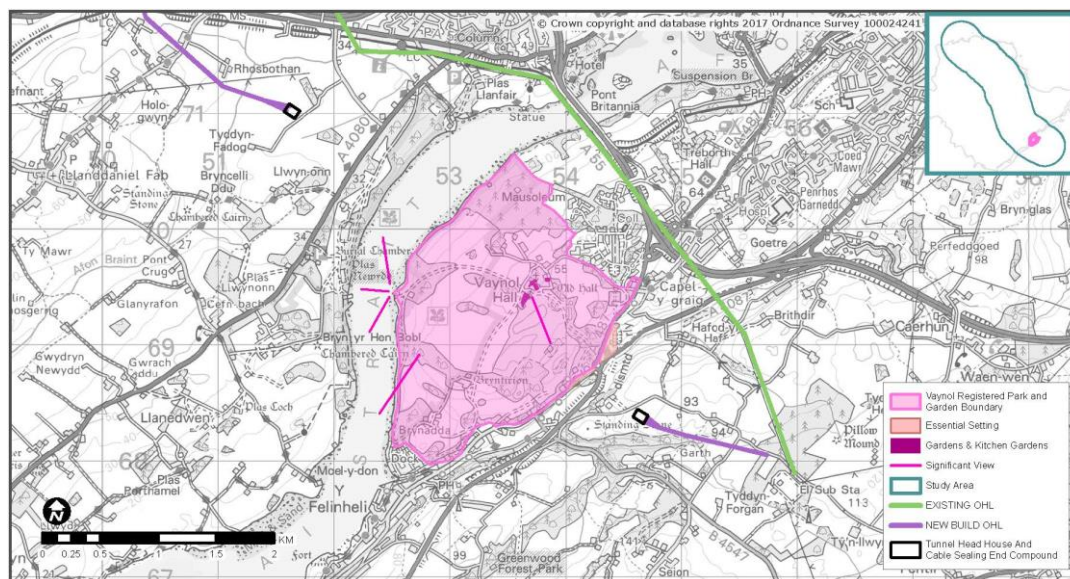
Value, Susceptibility and Sensitivity

- 1.2.19 As a Registered Park and Garden Plas Newydd has a high value. Due to the fact that it is a designed landscape it considered to have a high susceptibility to the Proposed Development. The overall sensitivity of this Registered Park and Garden to the Proposed Development is assessed as high.

Reason for Excluding from Landscape Assessment

- 1.2.20 Consideration of effects on this Registered Park and Garden is included within Chapter 10, Historic Environment Assessment (**Document 5.10**).

Vaynol Registered Park and Garden



Description of Baseline

- 1.2.21 Vaynol Registered Park and Garden lies to the south of the Menai Strait. This Grade I site consists of a well preserved Elizabethan garden between a walled coastal landscape park, with recently restored lake, laid out in the 1820s. It is described as having an ‘outstanding’ setting with Menai Strait on one side and Snowdonia National Park on the other.

VSAA in which it is located

- 1.2.22 Vaynol lies within GWNDDVS005 (refer Appendix 7.2, VSAA Character Assessment (**Document 5.7.2.2**)).

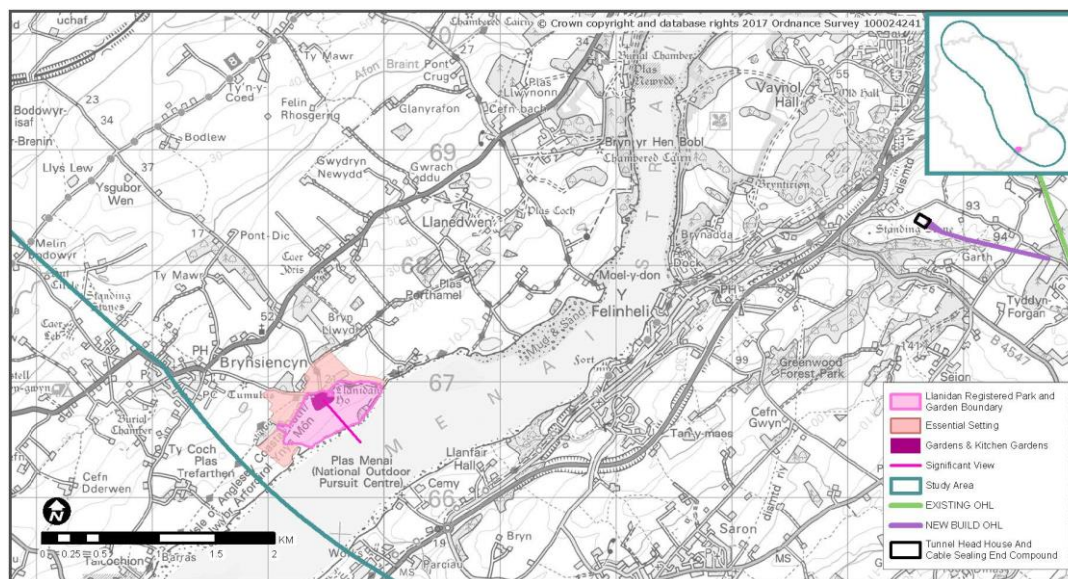
Value, Susceptibility and Sensitivity

- 1.2.23 As a Registered Park and Garden Vaynol has a high value. Due to the fact that it is a designed landscape it considered to have a high susceptibility to the Proposed Development. The overall sensitivity of this Registered Park and Garden to the Proposed Development is assessed as high.

Reason for Excluding from Landscape Assessment

- 1.2.24 Consideration of effects on this Registered Park and Garden is included within Chapter 10, Historic Environment Assessment (**Document 5.10**).

Llanidan Registered Park and Garden



Description of Baseline

- 1.2.25 Llanidan Registered Park and Garden lies to the south-west of the study area. This is a Grade II* registered site. It is an ancient site which include the walls of a walled garden and traces of a formal park. Llanidan has a small but well preserved late eighteenth century landscape park in an exceptional position on the Menai Strait, with well framed views to Snowdon.

VSAA in which it is located

- 1.2.26 Llanidan lies within YNSMNV026 (refer Appendix 7.2, VSAA Character Assessment (**Document 5.7.2.2**)).

Value, Susceptibility and Sensitivity

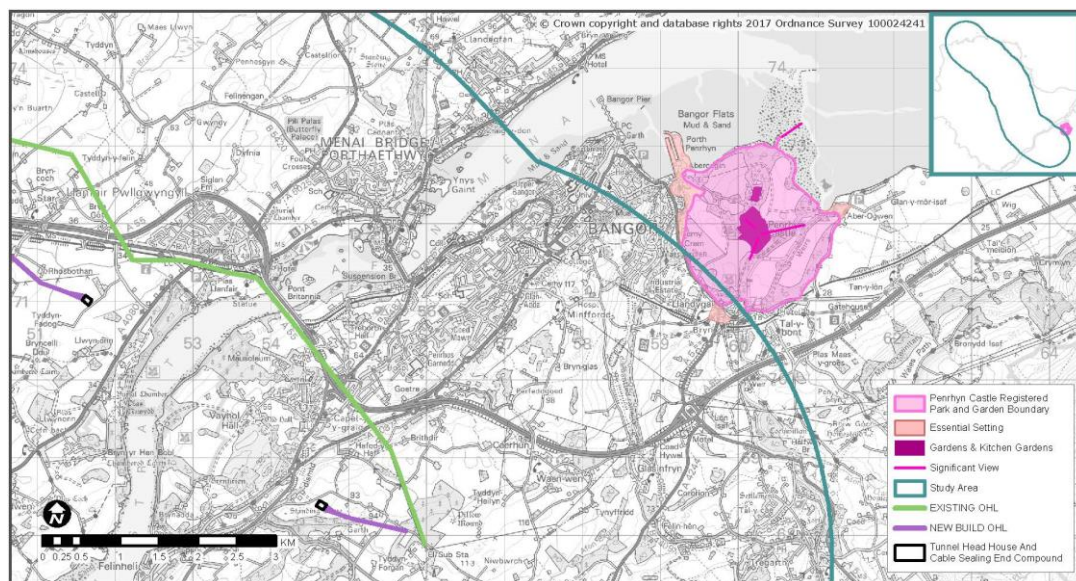
- 1.2.27 As a Registered Park and Garden Llanidan has a high value. Due to the fact that it is a designed landscape with a close relationship to the coast/Menai Strait it is considered to have a high susceptibility to the Proposed Development. The overall sensitivity of this Registered Park and Garden to the Proposed Development is assessed as high.

Reason for Excluding from Landscape Assessment

- 1.2.28 This Registered Park and Garden is located towards the outer edge of the study area (to the south west) along the shore of the Menai Straits in Anglesey. At its closest point it lies at some distance from the Proposed Development (approximately 4.3 km from the LOD and 3.7 km from the nearest point of the Order Limits).

- 1.2.29 Although the sensitivity of this discrete part of the landscape to the Proposed Development is considered to be high, it would not be directly affected by the construction, operation, maintenance or decommissioning phases of Proposed Development; construction traffic would not travel through it.
- 1.2.30 Due to its distance, activities and infrastructure associated with the construction, operation, maintenance and decommissioning phases of the Proposed Development would be barely perceptible from here, thus would not affect the character of the Registered Park and Garden.

Penrhyn Castle Registered Park and Garden



Description of Baseline

- 1.2.31 Penrhyn Castle Registered Park and Garden is a Grade II* nineteenth century landscape which lies outside the study area to the south-east. A small portion of its essential setting is located just within the study area boundary at Llandygai where the main entrance to the Castle is located. This designed landscape comprises parkland, woodland, a terraced garden, a walled kitchen garden and formal lawns. The setting, and relationship of the house with the park and landscape, is outstanding.

VSAA in which it is located

- 1.2.32 Penrhyn Castle lies within GWNDDVS002 (refer Appendix 7.2, VSAA Character Assessment (**Document 5.7.2.2**)).

Value, Susceptibility and Sensitivity

- 1.2.33 As a Registered Park and Garden Penrhyn Castle has a high value. Due to the fact that it is a designed landscape it is considered to have a high susceptibility to the Proposed Development. The overall sensitivity of this Registered Park and Garden to the Proposed Development is assessed as high.

Reason for Excluding from Landscape Assessment

- 1.2.34 The Registered Park and Garden itself lies wholly outside the study area. A small part of its essential setting lies just inside the outer edge of the study area to the south east. At its closest point the essential setting lies at some distance from the Proposed Development (approximately 4.9 km from the LOD and 4.3 km from the nearest point of the Order Limits).

- 1.2.35 Although the sensitivity of this discrete part of the landscape to the Proposed Development is considered to be high, it would not be directly affected by the construction, operation, maintenance or decommissioning phases of Proposed Development; construction traffic would not travel through it.
- 1.2.36 Due to its distance, activities and infrastructure associated with the construction, operation, maintenance and decommissioning phases of the Proposed Development would be barely perceptible from here, thus would not affect the character of the Registered Park and Garden.

Page intentionally blank